

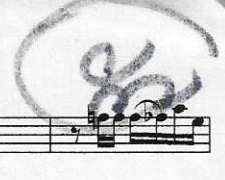
66

Divertissement for Bassoon and Band

Concours: Coups de Vents

♩ = 96

Score for Divertissement for Bassoon and Band, page 66. The score is for a concert band and includes parts for Bassoon, Piccolo, Flute 1, Flute 2, Oboe, Clarinet in Bb 1, 2, 3, Bass Clarinet, Alto Sax 1, 2, Tenor Sax, Baritone Sax, Trumpet in Bb 1, 2, 3, Horn in F 1, 2, 3, 4, Trombone 1, 2, 3, Baritone, and Tuba. The music is in 2/4 time with a key signature of two flats. The score features various dynamics (f, mp) and articulations (marcato).



This page of a musical score is numbered '2' at the top left. It features a variety of instruments including Bsn., Picc., Fl. 1, Fl. 2, Ob., B♭ Cl. 1, B♭ Cl. 2, B♭ Cl. 3, B. Cl., A. Sx. 1, A. Sx. 2, T. Sx., B. Sx., B♭ Tpt. 1, B♭ Tpt. 2, B♭ Tpt. 3, Hn. 1, Hn. 2, Hn. 3, Hn. 4, Tbn. 1, Tbn. 2, Tbn. 3, Bar., and Tuba. The score begins at measure 10, indicated by a '10' above the first staff. The music is written in a 3/4 time signature with a key signature of two flats (B♭ and E♭). The B♭ Clarinet parts (Cl. 1, 2, 3) and the Bass Clarinet part include a dynamic marking of *mp* (mezzo-piano) starting at measure 10. The woodwind parts (Flutes, Oboe, Bassoons) are mostly silent in this section, with some activity in the Flutes starting later. The brass and percussion parts (Trumpets, Horns, Trombones, Baritone, and Tuba) are active throughout, providing a rhythmic and harmonic foundation. The score is printed on a single page with a standard staff layout.

20

Bsn.

Picc.

Fl. 1

Fl. 2

Ob.

B♭ Cl. 1

B♭ Cl. 2

B♭ Cl. 3

B. Cl.

A. Sx. 1

A. Sx. 2

T. Sx.

B. Sx.

B♭ Tpt. 1

B♭ Tpt. 2

B♭ Tpt. 3

Hn. 1

Hn. 2

Hn. 3

Hn. 4

Tbn. 1

Tbn. 2

Tbn. 3

Bar.

Tuba

Detailed description: This is a page of a musical score, page 20, for a large ensemble. The score is written for 20 measures. The instruments listed on the left are: Bassoon (Bsn.), Piccolo (Picc.), Flute 1 (Fl. 1), Flute 2 (Fl. 2), Oboe (Ob.), B♭ Clarinet 1 (B♭ Cl. 1), B♭ Clarinet 2 (B♭ Cl. 2), B♭ Clarinet 3 (B♭ Cl. 3), Bass Clarinet (B. Cl.), Alto Saxophone 1 (A. Sx. 1), Alto Saxophone 2 (A. Sx. 2), Tenor Saxophone (T. Sx.), Baritone Saxophone (B. Sx.), B♭ Trumpet 1 (B♭ Tpt. 1), B♭ Trumpet 2 (B♭ Tpt. 2), B♭ Trumpet 3 (B♭ Tpt. 3), Horn 1 (Hn. 1), Horn 2 (Hn. 2), Horn 3 (Hn. 3), Horn 4 (Hn. 4), Trombone 1 (Tbn. 1), Trombone 2 (Tbn. 2), Trombone 3 (Tbn. 3), Baritone (Bar.), and Tuba. The score shows various musical notations including notes, rests, and dynamic markings. The key signature is B-flat major (two flats) and the time signature is 3/4. The page number '20' is written at the top left of the first staff.

This page of a musical score, page 4, contains measures 30 through 39. The score is for a symphony orchestra and includes the following parts:

- Bsn. (Bassoon):** Measures 30-39, featuring a melodic line with various articulations.
- Picc. (Piccolo):** Measures 30-39, mostly rests.
- Fl. 1 (Flute 1):** Measures 30-39, mostly rests.
- Fl. 2 (Flute 2):** Measures 30-39, mostly rests.
- Ob. (Oboe):** Measures 30-39, mostly rests.
- B♭ Cl. 1 (Bass Clarinet 1):** Measures 30-39, mostly rests.
- B♭ Cl. 2 (Bass Clarinet 2):** Measures 30-39, mostly rests.
- B♭ Cl. 3 (Bass Clarinet 3):** Measures 30-39, mostly rests.
- B. Cl. (Bass Clarinet):** Measures 30-39, mostly rests.
- A. Sx. 1 (Alto Saxophone 1):** Measures 30-39, mostly rests.
- A. Sx. 2 (Alto Saxophone 2):** Measures 30-39, mostly rests.
- T. Sx. (Tenor Saxophone):** Measures 30-39, mostly rests.
- B. Sx. (Baritone Saxophone):** Measures 30-39, mostly rests.
- B♭ Tpt. 1 (Bass Trumpet 1):** Measures 30-39, featuring a rhythmic pattern.
- B♭ Tpt. 2 (Bass Trumpet 2):** Measures 30-39, featuring a rhythmic pattern.
- B♭ Tpt. 3 (Bass Trumpet 3):** Measures 30-39, featuring a rhythmic pattern.
- Hn. 1 (Horn 1):** Measures 30-39, featuring a rhythmic pattern.
- Hn. 2 (Horn 2):** Measures 30-39, featuring a rhythmic pattern.
- Hn. 3 (Horn 3):** Measures 30-39, featuring a rhythmic pattern.
- Hn. 4 (Horn 4):** Measures 30-39, featuring a rhythmic pattern.
- Tbn. 1 (Trombone 1):** Measures 30-39, featuring a rhythmic pattern.
- Tbn. 2 (Trombone 2):** Measures 30-39, featuring a rhythmic pattern.
- Tbn. 3 (Trombone 3):** Measures 30-39, featuring a rhythmic pattern.
- Bar. (Baritone):** Measures 30-39, featuring a melodic line.
- Tuba:** Measures 30-39, featuring a melodic line.

40

Bsn. *cresc.* *ff*

Picc.

Fl. 1

Fl. 2 *f*

Ob. *f*

B♭ Cl. 1

B♭ Cl. 2

B♭ Cl. 3

B. Cl.

A. Sx. 1 *f*

A. Sx. 2

T. Sx.

B. Sx.

B♭ Tpt. 1 *mf*

B♭ Tpt. 2 *mf*

B♭ Tpt. 3 *mf*

Hn. 1 *mf*

Hn. 2 *mf*

Hn. 3 *mf*

Hn. 4 *mf*

Tbn. 1 *mf*

Tbn. 2 *mf*

Tbn. 3 *mf*

Bar. *mf*

Tuba *mf*

49

Bsn.

Picc.

Fl. 1

Fl. 2

Ob.

B♭ Cl. 1

B♭ Cl. 2

B♭ Cl. 3

B. Cl.

A. Sx. 1

A. Sx. 2

T. Sx.

B. Sx.

B♭ Tpt. 1

B♭ Tpt. 2

B♭ Tpt. 3

Hn. 1

Hn. 2

Hn. 3

Hn. 4

Tbn. 1

Tbn. 2

Tbn. 3

Bar.

Tuba

58 *rit.* *a tempo espressivo*

Bsn. *f* *rit.* *a tempo*

Picc. *rit.* *a tempo*

Fl. 1 *rit.* *a tempo*

Fl. 2 *mp* *rit.* *a tempo p*

Ob. *mp* *rit.* *a tempo p*

B♭ Cl. 1 *rit.* *a tempo p*

B♭ Cl. 2 *rit.* *a tempo p*

B♭ Cl. 3 *rit.* *a tempo p*

B. Cl. *rit.* *p* *a tempo*

A. Sx. 1 *rit.* *a tempo*

A. Sx. 2 *rit.* *a tempo*

T. Sx. *rit.* *a tempo*

B. Sx. *rit.* *p* *a tempo p*

B♭ Tpt. 1 *rit.* *a tempo*

B♭ Tpt. 2 *rit.* *a tempo*

B♭ Tpt. 3 *rit.* *p* *a tempo*

Hn. 1 *rit.* *p* *a tempo*

Hn. 2 *rit.* *p* *a tempo*

Hn. 3 *rit.* *p* *a tempo*

Hn. 4 *rit.* *p* *a tempo*

Tbn. 1 *rit.* *p* *a tempo*

Tbn. 2 *rit.* *p* *a tempo*

Tbn. 3 *rit.* *p* *a tempo*

Bar. *rit.* *p* *a tempo*

Tuba *rit.* *p* *a tempo*

72

Bsn.

Picc.

Fl. 1

Fl. 2

Ob.

B♭ Cl. 1

B♭ Cl. 2

B♭ Cl. 3

B. Cl.

A. Sx. 1

A. Sx. 2

T. Sx.

B. Sx.

B♭ Tpt. 1

B♭ Tpt. 2

B♭ Tpt. 3

Hn. 1

Hn. 2

Hn. 3

Hn. 4

Tbn. 1

Tbn. 2

Tbn. 3

Bar.

Tuba

Musical score for a symphony orchestra, page 9. The score includes parts for Bsn., Picc., Fl. 1, Fl. 2, Ob., B♭ Cl. 1, B♭ Cl. 2, B♭ Cl. 3, B. Cl., A. Sx. 1, A. Sx. 2, T. Sx., B. Sx., B♭ Tpt. 1, B♭ Tpt. 2, B♭ Tpt. 3, Hn. 1, Hn. 2, Hn. 3, Hn. 4, Tbn. 1, Tbn. 2, Tbn. 3, Bar., and Tuba. The woodwind and string sections have active parts, while the brass section is mostly silent.

This page of a musical score, numbered 10, contains staves for the following instruments: Bsn., Picc., Fl. 1, Fl. 2, Ob., B♭ Cl. 1, B♭ Cl. 2, B♭ Cl. 3, B. Cl., A. Sax. 1, A. Sax. 2, T. Sax., B. Sax., B♭ Tpt. 1, B♭ Tpt. 2, B♭ Tpt. 3, Hn. 1, Hn. 2, Hn. 3, Hn. 4, Tbn. 1, Tbn. 2, Tbn. 3, Bar., and Tuba. The score is written in a key signature of two flats (B♭ major or D minor) and a 3/4 time signature. The Bsn. part begins with a dynamic marking of *pp* and ends with *ff*. The woodwind and brass parts are mostly silent, with some activity in the B♭ Clarinet 3, Bass Clarinet, Saxophone, and Tuba parts towards the end of the page.

112

Bsn.

Picc.

Fl. 1

Fl. 2

Ob.

B♭ Cl. 1

B♭ Cl. 2

B♭ Cl. 3

B. Cl.

A. Sx. 1

A. Sx. 2

T. Sx.

B. Sx.

B♭ Tpt. 1

B♭ Tpt. 2

B♭ Tpt. 3

Hn. 1

Hn. 2

Hn. 3

Hn. 4

Tbn. 1

Tbn. 2

Tbn. 3

Bar.

Tuba

marcato

f

This page of a musical score, numbered 12, contains 24 staves for various instruments. The instruments listed on the left are: Bsn., Picc., Fl. 1, Fl. 2, Ob., B♭ Cl. 1, B♭ Cl. 2, B♭ Cl. 3, B. Cl., A. Sax. 1, A. Sax. 2, T. Sax., B. Sax., B♭ Tpt. 1, B♭ Tpt. 2, B♭ Tpt. 3, Hn. 1, Hn. 2, Hn. 3, Hn. 4, Tbn. 1, Tbn. 2, Tbn. 3, Bar., and Tuba. The score begins at measure 122. The Bsn. part has a melodic line with a dynamic marking of *mf*. The Picc., Fl. 1, Fl. 2, and Ob. parts are mostly silent until measure 125, where they enter with a dynamic marking of *f*. The B♭ Cl. 1, 2, and 3 parts have melodic lines starting at measure 122 with a dynamic marking of *mf*. The B. Cl. part has a melodic line starting at measure 122 with a dynamic marking of *mf*. The A. Sax. 1 part has a melodic line starting at measure 125 with a dynamic marking of *f*. The B. Sax. part has a melodic line starting at measure 125 with a dynamic marking of *mf*. The B♭ Tpt. 1, 2, and 3 parts have rhythmic patterns starting at measure 125 with a dynamic marking of *mf*. The Hn. 1, 2, 3, and 4 parts have rhythmic patterns starting at measure 125 with a dynamic marking of *mf*. The Tbn. 1, 2, and 3 parts have rhythmic patterns starting at measure 125 with a dynamic marking of *mf*. The Bar. and Tuba parts have rhythmic patterns starting at measure 125 with a dynamic marking of *mf*.

134 *Espressivo* ♩=72

Bsn. *Espressivo* ♩=72 *mp*

Picc. *Espressivo* ♩=72 *p*

Fl. 1 *Espressivo* ♩=72 *p*

Fl. 2 *Espressivo* ♩=72 *p*

Ob. *Espressivo* ♩=72 *p*

B♭ Cl. 1 *Espressivo* ♩=72 *p*

B♭ Cl. 2 *Espressivo* ♩=72 *p*

B♭ Cl. 3 *Espressivo* ♩=72 *p*

B. Cl. *Espressivo* ♩=72 *p*

A. Sx. 1 *Espressivo* ♩=72 *p*

A. Sx. 2 *Espressivo* ♩=72 *p*

T. Sx. *Espressivo* ♩=72 *p*

B. Sx. *Espressivo* ♩=72 *p*

B♭ Tpt. 1 *Espressivo* ♩=72

B♭ Tpt. 2 *Espressivo* ♩=72

B♭ Tpt. 3 *Espressivo* ♩=72

Hn. 1 *Espressivo* ♩=72 *pp*

Hn. 2 *Espressivo* ♩=72 *pp*

Hn. 3 *Espressivo* ♩=72

Hn. 4 *Espressivo* ♩=72

Tbn. 1 *Espressivo* ♩=72 *p*

Tbn. 2 *Espressivo* ♩=72 *p*

Tbn. 3 *Espressivo* ♩=72 *p*

Bar. *Espressivo* ♩=72 *p*

Tuba *Espressivo* ♩=72 *p*

145

Bsn.

Picc.

Fl. 1

Fl. 2

Ob.

B♭ Cl. 1

B♭ Cl. 2

B♭ Cl. 3

B. Cl.

A. Sx. 1

A. Sx. 2

T. Sx.

B. Sx.

B♭ Tpt. 1

B♭ Tpt. 2

B♭ Tpt. 3

Hn. 1

Hn. 2

Hn. 3

Hn. 4

Tbn. 1

Tbn. 2

Tbn. 3

Bar.

Tuba

p

pp

con sord.

pp

pp

157

Bsn.

Picc.

Fl. 1

Fl. 2

Ob.

B♭ Cl. 1

B♭ Cl. 2

B♭ Cl. 3

B. Cl.

A. Sx. 1

A. Sx. 2

T. Sx.

B. Sx.

B♭ Tpt. 1

B♭ Tpt. 2

B♭ Tpt. 3

Hn. 1

Hn. 2

Hn. 3

Hn. 4

Tbn. 1

Tbn. 2

Tbn. 3

Bar.

Tuba

mf

p

pp

mp

f

3

157

158

This page of a musical score, numbered 16, contains measures 167 through 172. The score is arranged in a standard orchestral format with multiple staves for each instrument family. The instruments listed on the left are: Bsn. (Bassoon), Picc. (Piccolo), Fl. 1 and Fl. 2 (Flutes), Ob. (Oboe), B♭ Cl. 1, 2, and 3 (B-flat Clarinets), B. Cl. (Bass Clarinet), A. Sx. 1 and 2 (Alto Saxophones), T. Sx. (Tenor Saxophone), B. Sx. (Baritone Saxophone), B♭ Tpt. 1, 2, and 3 (B-flat Trumpets), Hn. 1, 2, 3, and 4 (Horns), Tbn. 1, 2, and 3 (Trombones), Bar. (Baritone), and Tuba. The key signature is one sharp (F#), and the time signature is 4/4. The score includes various musical notations such as notes, rests, slurs, and dynamic markings. A 'p' (piano) marking is present in the B. Sx. staff at measure 170 and in the Tbn. 1 and 2 staves at measure 171. The Bsn. staff begins with a measure rest for 167 measures, followed by a melodic line. The Picc. staff has a measure rest for 167 measures, then plays a melodic line. The Fl. 1 and 2 staves have measure rests for 167 measures, then play a melodic line. The Ob. staff has a measure rest for 167 measures, then plays a melodic line. The B♭ Cl. 1, 2, and 3 staves have measure rests for 167 measures, then play a melodic line. The B. Cl. staff has a measure rest for 167 measures, then plays a melodic line. The A. Sx. 1 and 2 staves have measure rests for 167 measures, then play a melodic line. The T. Sx. staff has a measure rest for 167 measures, then plays a melodic line. The B. Sx. staff has a measure rest for 167 measures, then plays a melodic line. The B♭ Tpt. 1, 2, and 3 staves have measure rests for 167 measures, then play a melodic line. The Hn. 1, 2, 3, and 4 staves have measure rests for 167 measures, then play a melodic line. The Tbn. 1, 2, and 3 staves have measure rests for 167 measures, then play a melodic line. The Bar. staff has a measure rest for 167 measures, then plays a melodic line. The Tuba staff has a measure rest for 167 measures, then plays a melodic line.

174

Bsn. *f*

Picc.

Fl. 1 *mp* *p*

Fl. 2 *mp* *p*

Ob. *mp* *p*

B♭ Cl. 1 *mp* *f* *p*

B♭ Cl. 2 *mp* *f* *p*

B♭ Cl. 3 *mp* *f* *p*

B. Cl. (*ossia*) *mp* *p*

A. Sax. 1 *mp*

A. Sax. 2 *mp*

T. Sax. *mp*

B. Sax. *mp*

B♭ Tpt. 1

B♭ Tpt. 2

B♭ Tpt. 3

Hn. 1 *mp* *p*

Hn. 2 *p*

Hn. 3 *p*

Hn. 4 *p*

Tbn. 1

Tbn. 2

Tbn. 3

Bar.

Tuba *p*

ad lib.

185

Bsn.

ad lib.

Picc.

185

ad lib.

Fl. 1

ad lib.

mp

Fl. 2

ad lib.

mp

Ob.

ad lib.

mp

B♭ Cl. 1

ad lib.

mp

B♭ Cl. 2

ad lib.

mp

B♭ Cl. 3

ad lib.

mp

B. Cl.

ad lib.

mp

A. Sx. 1

ad lib.

mp

A. Sx. 2

ad lib.

mp

T. Sx.

ad lib.

mp

B. Sx.

ad lib.

185

B♭ Tpt. 1

ad lib.

B♭ Tpt. 2

ad lib.

B♭ Tpt. 3

ad lib.

Hn. 1

ad lib.

Hn. 2

ad lib.

Hn. 3

ad lib.

Hn. 4

ad lib.

Tbn. 1

ad lib.

Tbn. 2

ad lib.

Tbn. 3

ad lib.

Bar.

ad lib.

Tuba

ad lib.

193 *accel.* *rit.* **Allegretto** (M.M. ♩ = c. 112)

Bsn.

Picc.

Fl. 1 *mf* *accel.* *rit.* **Allegretto** (M.M. ♩ = c. 112)

Fl. 2 *mf* *accel.* *rit.* **Allegretto** (M.M. ♩ = c. 112)

Ob. *mp* *mf* *accel.* *rit.* **Allegretto** (M.M. ♩ = c. 112)

B♭ Cl. 1 *mf* *accel.* *rit.* **Allegretto** (M.M. ♩ = c. 112)

B♭ Cl. 2 *mf* *accel.* *rit.* **Allegretto** (M.M. ♩ = c. 112)

B♭ Cl. 3 *mf* *accel.* *rit.* **Allegretto** (M.M. ♩ = c. 112)

B. Cl. *mf* *accel.* *rit.* **Allegretto** (M.M. ♩ = c. 112)

A. Sax. 1 *mf* *accel.* *rit.* **Allegretto** (M.M. ♩ = c. 112)

A. Sax. 2 *mf* *accel.* *rit.* **Allegretto** (M.M. ♩ = c. 112)

T. Sax. *mf* *accel.* *rit.* **Allegretto** (M.M. ♩ = c. 112)

B. Sax. *mf* *accel.* *rit.* **Allegretto** (M.M. ♩ = c. 112)

B♭ Tpt. 1 *mf* *accel.* *rit.* **Allegretto** (M.M. ♩ = c. 112)

B♭ Tpt. 2 *mf* *accel.* *rit.* **Allegretto** (M.M. ♩ = c. 112)

B♭ Tpt. 3 *mf* *accel.* *rit.* **Allegretto** (M.M. ♩ = c. 112)

Hn. 1 *mp* *mf* *accel.* *rit.* **Allegretto** (M.M. ♩ = c. 112)

Hn. 2 *mp* *mf* *accel.* *rit.* **Allegretto** (M.M. ♩ = c. 112)

Hn. 3 *mp* *mf* *accel.* *rit.* **Allegretto** (M.M. ♩ = c. 112)

Hn. 4 *mp* *mf* *accel.* *rit.* **Allegretto** (M.M. ♩ = c. 112)

Tbn. 1 *mf* *accel.* *rit.* **Allegretto** (M.M. ♩ = c. 112)

Tbn. 2 *mf* *accel.* *rit.* **Allegretto** (M.M. ♩ = c. 112)

Tbn. 3 *mf* *accel.* *rit.* **Allegretto** (M.M. ♩ = c. 112)

Bar. *mf* *accel.* *rit.* **Allegretto** (M.M. ♩ = c. 112)

Tuba *mf* *accel.* *rit.* **Allegretto** (M.M. ♩ = c. 112)

205

Bsn.

Picc.

Fl. 1

Fl. 2

Ob.

B♭ Cl. 1

B♭ Cl. 2

B♭ Cl. 3

B. Cl.

A. Sx. 1

A. Sx. 2

T. Sx.

B. Sx.

B♭ Tpt. 1

B♭ Tpt. 2

B♭ Tpt. 3

Hn. 1

Hn. 2

Hn. 3

Hn. 4

Tbn. 1

Tbn. 2

Tbn. 3

Bar.

Tuba

mp

Musical score for page 21, measures 220-229. The score includes parts for Bsn., Picc., Fl. 1, Fl. 2, Ob., B♭ Cl. 1, B♭ Cl. 2, B♭ Cl. 3, B. Cl., A. Sx. 1, A. Sx. 2, T. Sx., B. Sx., B♭ Tpt. 1, B♭ Tpt. 2, B♭ Tpt. 3, Hn. 1, Hn. 2, Hn. 3, Hn. 4, Tbn. 1, Tbn. 2, Tbn. 3, Bar., and Tuba. Dynamics include *mf*, *mp*, and *p*.

This page of a musical score, numbered 22, contains staves for various instruments. The woodwind section includes Bsn., Picc., Fl. 1, Fl. 2, Ob., B♭ Cl. 1, B♭ Cl. 2, B♭ Cl. 3, B. Cl., A. Sx. 1, A. Sx. 2, T. Sx., and B. Sx. The brass section includes B♭ Tpt. 1, B♭ Tpt. 2, B♭ Tpt. 3, Hn. 1, Hn. 2, Hn. 3, Hn. 4, Tbn. 1, Tbn. 2, Tbn. 3, Bar., and Tuba. The score begins at measure 234. The woodwinds and brass parts feature complex rhythmic patterns, including sixteenth and thirty-second notes, often beamed together. The strings (Sx.) are mostly silent, indicated by rests on their staves.

246

Bsn. *f*

Picc.

Fl. 1 *mp*

Fl. 2 *mp*

Ob. *mp*

B♭ Cl. 1 *p*

B♭ Cl. 2 *p*

B♭ Cl. 3 *p*

B. Cl. *p*

A. Sx. 1 *p*

A. Sx. 2 *p*

T. Sx. *p*

B. Sx. *p*

B♭ Tpt. 1 *con sord.* *mp*

B♭ Tpt. 2

B♭ Tpt. 3

Hn. 1

Hn. 2

Hn. 3

Hn. 4

Tbn. 1

Tbn. 2

Tbn. 3

Bar.

Tuba

258

Bsn.

Picc.

Fl. 1

Fl. 2

Ob.

B♭ Cl. 1

B♭ Cl. 2

B♭ Cl. 3

B. Cl.

A. Sx. 1

A. Sx. 2

T. Sx.

B. Sx.

258

B♭ Tpt. 1

B♭ Tpt. 2

B♭ Tpt. 3

Hn. 1

Hn. 2

Hn. 3

Hn. 4

Tbn. 1

Tbn. 2

Tbn. 3

Bar.

Tuba

Detailed description: This is a page of a musical score, page 24, numbered 258. It contains 28 staves for various instruments. The top staff is for Bassoon (Bsn.), followed by Piccolo (Picc.), Flute 1 (Fl. 1), Flute 2 (Fl. 2), Oboe (Ob.), three B-flat Clarinets (B♭ Cl. 1, 2, 3), Bass Clarinet (B. Cl.), two Alto Saxophones (A. Sx. 1, 2), Tenor Saxophone (T. Sx.), Bass Saxophone (B. Sx.), three B-flat Trumpets (B♭ Tpt. 1, 2, 3), four Horns (Hn. 1, 2, 3, 4), three Trombones (Tbn. 1, 2, 3), Baritone (Bar.), and Tuba. The score is written in a key signature of three sharps (F#, C#, G#) and a common time signature (C). The music features a variety of note values, including eighth, quarter, and half notes, with some slurs and ties. The bottom half of the page (from the Tuba staff) is mostly empty, indicating that these instruments are silent for this section.

271 *rit.* **Moderato** ♩ = 92

Bsn. *rit.* **Moderato** ♩ = 92

Picc. *rit.* **Moderato** ♩ = 92

Fl. 1 *rit.* **Moderato** ♩ = 92

Fl. 2 *rit.* **Moderato** ♩ = 92

Ob. *rit.* **Moderato** ♩ = 92

B♭ Cl. 1 *rit.* **Moderato** ♩ = 92

B♭ Cl. 2 *rit.* **Moderato** ♩ = 92

B♭ Cl. 3 *rit.* **Moderato** ♩ = 92

B. Cl. *rit.* **Moderato** ♩ = 92

A. Sx. 1 *rit.* **Moderato** ♩ = 92

A. Sx. 2 *rit.* **Moderato** ♩ = 92

T. Sx. *rit.* **Moderato** ♩ = 92

B. Sx. *rit.* **Moderato** ♩ = 92

B♭ Tpt. 1 *rit.* **Moderato** ♩ = 92

B♭ Tpt. 2 *rit.* **Moderato** ♩ = 92

B♭ Tpt. 3 *rit.* **Moderato** ♩ = 92

Hn. 1 *rit.* **Moderato** ♩ = 92

Hn. 2 *rit.* **Moderato** ♩ = 92

Hn. 3 *rit.* **Moderato** ♩ = 92

Hn. 4 *rit.* **Moderato** ♩ = 92

Tbn. 1 *rit.* **Moderato** ♩ = 92

Tbn. 2 *rit.* **Moderato** ♩ = 92

Tbn. 3 *rit.* **Moderato** ♩ = 92

Bar. *rit.* **Moderato** ♩ = 92

Tuba *rit.* **Moderato** ♩ = 92

mf

This page of a musical score, numbered 27, contains staves for the following instruments: Bsn., Picc., Fl. 1, Fl. 2, Ob., B♭ Cl. 1, B♭ Cl. 2, B♭ Cl. 3, B. Cl., A. Sx. 1, A. Sx. 2, T. Sx., B. Sx., B♭ Tpt. 1, B♭ Tpt. 2, B♭ Tpt. 3, Hn. 1, Hn. 2, Hn. 3, Hn. 4, Tbn. 1, Tbn. 2, Tbn. 3, Bar., and Tuba. The score begins at measure 304. The B♭ Tpt. 1 part includes the instruction *con sord.* and a dynamic marking of *p*. Other parts also feature *p* markings. The notation includes various note values, rests, and slurs across the staves.

321

Bsn.

Picc.

Fl. 1

Fl. 2

Ob.

B♭ Cl. 1

B♭ Cl. 2

B♭ Cl. 3

B. Cl. *(ossia)*

A. Sx. 1

A. Sx. 2

T. Sx.

B. Sx.

321

B♭ Tpt. 1

B♭ Tpt. 2

B♭ Tpt. 3

Hn. 1

Hn. 2

Hn. 3

Hn. 4

Tbn. 1

Tbn. 2

Tbn. 3

Bar.

Tuba

337

rit. *ad lib.* *meno mosso*

Bsn.

rit. *ad lib.* *meno mosso*

Picc.

rit. *ad lib.* *meno mosso*

Fl. 1

rit. *ad lib.* *p* *meno mosso*

Fl. 2

rit. *ad lib.* *p* *meno mosso*

Ob.

rit. *ad lib.* *meno mosso*

B♭ Cl. 1

p *rit.* *ad lib.* *p* *meno mosso*

B♭ Cl. 2

p *rit.* *ad lib.* *p* *meno mosso*

B♭ Cl. 3

p *rit.* *ad lib.* *meno mosso*

B. Cl.

rit. *ad lib.* *meno mosso*

A. Sax. 1

rit. *ad lib.* *meno mosso*

A. Sax. 2

rit. *ad lib.* *meno mosso*

T. Sax.

rit. *ad lib.* *meno mosso*

B. Sax.

rit. *ad lib.* *meno mosso*

B♭ Tpt. 1

rit. *ad lib.* *meno mosso*

B♭ Tpt. 2

rit. *ad lib.* *meno mosso*

B♭ Tpt. 3

rit. *ad lib.* *meno mosso*

Hn. 1

rit. *ad lib.* *meno mosso*

Hn. 2

rit. *ad lib.* *meno mosso*

Hn. 3

rit. *ad lib.* *meno mosso*

Hn. 4

rit. *ad lib.* *meno mosso*

Tbn. 1

rit. *ad lib.* *meno mosso*

Tbn. 2

rit. *ad lib.* *meno mosso*

Tbn. 3

rit. *ad lib.* *meno mosso*

Bar.

rit. *ad lib.* *meno mosso*

Tuba

rit. *ad lib.* *meno mosso*

351

Bsn.

Picc.

Fl. 1

Fl. 2

Ob.

B♭ Cl. 1

B♭ Cl. 2

B♭ Cl. 3

B. Cl.

A. Sx. 1

A. Sx. 2

T. Sx.

B. Sx.

351

B♭ Tpt. 1

B♭ Tpt. 2

B♭ Tpt. 3

Hn. 1

Hn. 2

Hn. 3

Hn. 4

Tbn. 1

Tbn. 2

Tbn. 3

Bar.

Tuba

365 rit. Allegretto (M.M. ♩ = c. 112)

Bsn.

Picc.

Fl. 1

Fl. 2

Ob.

B♭ Cl. 1

B♭ Cl. 2

B♭ Cl. 3

B. Cl.

A. Sx. 1

A. Sx. 2

T. Sx.

B. Sx.

B♭ Tpt. 1

B♭ Tpt. 2

B♭ Tpt. 3

Hn. 1

Hn. 2

Hn. 3

Hn. 4

Tbn. 1

Tbn. 2

Tbn. 3

Bar.

Tuba

mf

380

Bsn.

Picc.

Fl. 1

Fl. 2

Ob.

B♭ Cl. 1

B♭ Cl. 2

B♭ Cl. 3

B. Cl.

A. Sx. 1

A. Sx. 2

T. Sx.

B. Sx.

B♭ Tpt. 1

B♭ Tpt. 2

B♭ Tpt. 3

Hn. 1

Hn. 2

Hn. 3

Hn. 4

Tbn. 1

Tbn. 2

Tbn. 3

Bar.

Tuba

Musical score for page 32, measures 380-389. The score includes parts for Bsn., Picc., Fl. 1, Fl. 2, Ob., B♭ Cl. 1, B♭ Cl. 2, B♭ Cl. 3, B. Cl., A. Sx. 1, A. Sx. 2, T. Sx., B. Sx., B♭ Tpt. 1, B♭ Tpt. 2, B♭ Tpt. 3, Hn. 1, Hn. 2, Hn. 3, Hn. 4, Tbn. 1, Tbn. 2, Tbn. 3, Bar., and Tuba. Dynamics include *mp* and *subito p*.

393 *f* *l'istesso tempo*

Bsn. *f* *l'istesso tempo*

Picc. *f* *l'istesso tempo*

Fl. 1 *f* *l'istesso tempo* *mp*

Fl. 2 *f* *l'istesso tempo* *mp*

Ob. *f* *l'istesso tempo* *mp*

B \flat Cl. 1 *f* *l'istesso tempo* *mp*

B \flat Cl. 2 *f* *l'istesso tempo* *mp*

B \flat Cl. 3 *f* *l'istesso tempo* *mp*

B. Cl. *f* *l'istesso tempo (ossia)* *mp*

A. Sx. 1 *f* *l'istesso tempo* *mp*

A. Sx. 2 *f* *l'istesso tempo* *mp*

T. Sx. *f* *l'istesso tempo* *mp*

B. Sx. *f* *l'istesso tempo* *mp*

B \flat Tpt. 1 *mf* *l'istesso tempo* *mp*

B \flat Tpt. 2 *mf* *l'istesso tempo*

B \flat Tpt. 3 *mf* *l'istesso tempo*

Hn. 1 *mf* *l'istesso tempo*

Hn. 2 *mf* *l'istesso tempo*

Hn. 3 *mf* *l'istesso tempo*

Hn. 4 *mf* *l'istesso tempo*

Tbn. 1 *mf* *l'istesso tempo*

Tbn. 2 *mf* *l'istesso tempo*

Tbn. 3 *mf* *l'istesso tempo*

Bar. *mf* *l'istesso tempo*

Tuba *mf* *l'istesso tempo*

405 Allegretto (M.M. ♩ = c. 112) rit. ff

Bsn. Allegretto (M.M. ♩ = c. 112) rit. ff

Picc. Allegretto (M.M. ♩ = c. 112) rit. ff

Fl. 1 Allegretto (M.M. ♩ = c. 112) rit. ff

Fl. 2 Allegretto (M.M. ♩ = c. 112) rit. ff

Ob. Allegretto (M.M. ♩ = c. 112) rit. ff

B♭ Cl. 1 Allegretto (M.M. ♩ = c. 112) rit. ff

B♭ Cl. 2 Allegretto (M.M. ♩ = c. 112) rit. ff

B♭ Cl. 3 Allegretto (M.M. ♩ = c. 112) rit. ff

B. Cl. Allegretto (M.M. ♩ = c. 112) rit. ff

A. Sx. 1 Allegretto (M.M. ♩ = c. 112) mp rit. ff

A. Sx. 2 Allegretto (M.M. ♩ = c. 112) mp rit. ff

T. Sx. Allegretto (M.M. ♩ = c. 112) mp rit. ff

B. Sx. Allegretto (M.M. ♩ = c. 112) mp rit. ff

B♭ Tpt. 1 Allegretto (M.M. ♩ = c. 112) rit. ff

B♭ Tpt. 2 Allegretto (M.M. ♩ = c. 112) rit. ff

B♭ Tpt. 3 Allegretto (M.M. ♩ = c. 112) rit. ff

Hn. 1 Allegretto (M.M. ♩ = c. 112) mp rit. ff

Hn. 2 Allegretto (M.M. ♩ = c. 112) mp rit. ff

Hn. 3 Allegretto (M.M. ♩ = c. 112) mp rit. ff

Hn. 4 Allegretto (M.M. ♩ = c. 112) mp rit. ff

Tbn. 1 Allegretto (M.M. ♩ = c. 112) mp rit. ff

Tbn. 2 Allegretto (M.M. ♩ = c. 112) mp rit. ff

Tbn. 3 Allegretto (M.M. ♩ = c. 112) mp rit. ff

Bar. Allegretto (M.M. ♩ = c. 112) mp rit. ff

Tuba Allegretto (M.M. ♩ = c. 112) mp rit. ff